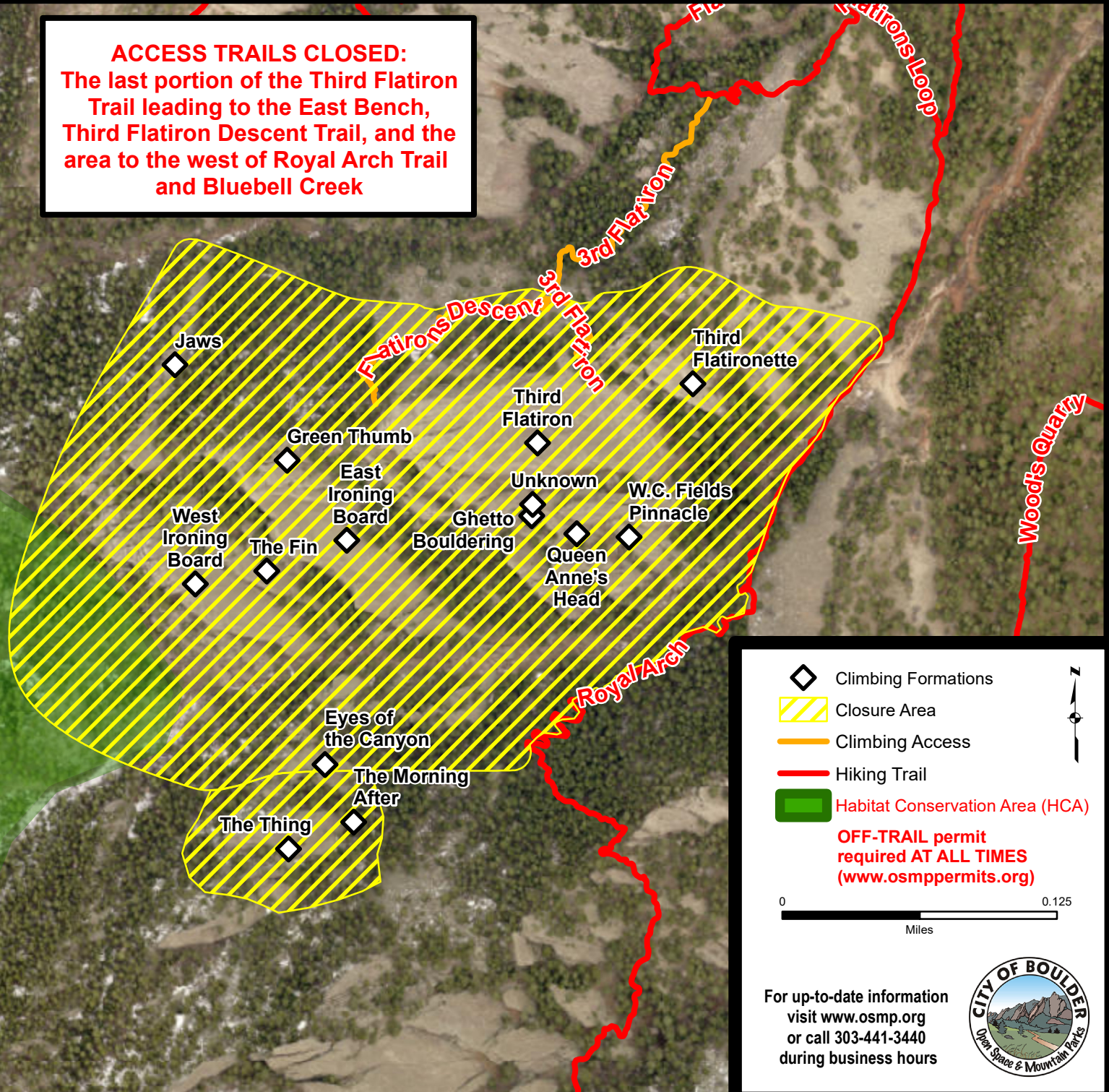


Entering a Wildlife Closure Area may result in fines up to \$1000 and/or 90 days in jail

Raptor Closure Area

The ENTIRE THIRD FLATIRON including Queen Anne's Head, W.C Fields Pinnacle, 1911 Gully and the Ghetto, the East Bench & West Bench, the East & West Ironing Boards, The Fin, Green Thumb, Jaws, The Thing and The Morning After will be CLOSED TO ALL VISITORS February 1st THRU July 31st to protect nesting & roosting raptors. The Royal Arch Trail remains open.

ACCESS TRAILS CLOSED:
The last portion of the Third Flatiron Trail leading to the East Bench, Third Flatiron Descent Trail, and the area to the west of Royal Arch Trail and Bluebell Creek



For up-to-date information
visit www.osmp.org
or call 303-441-3440
during business hours

